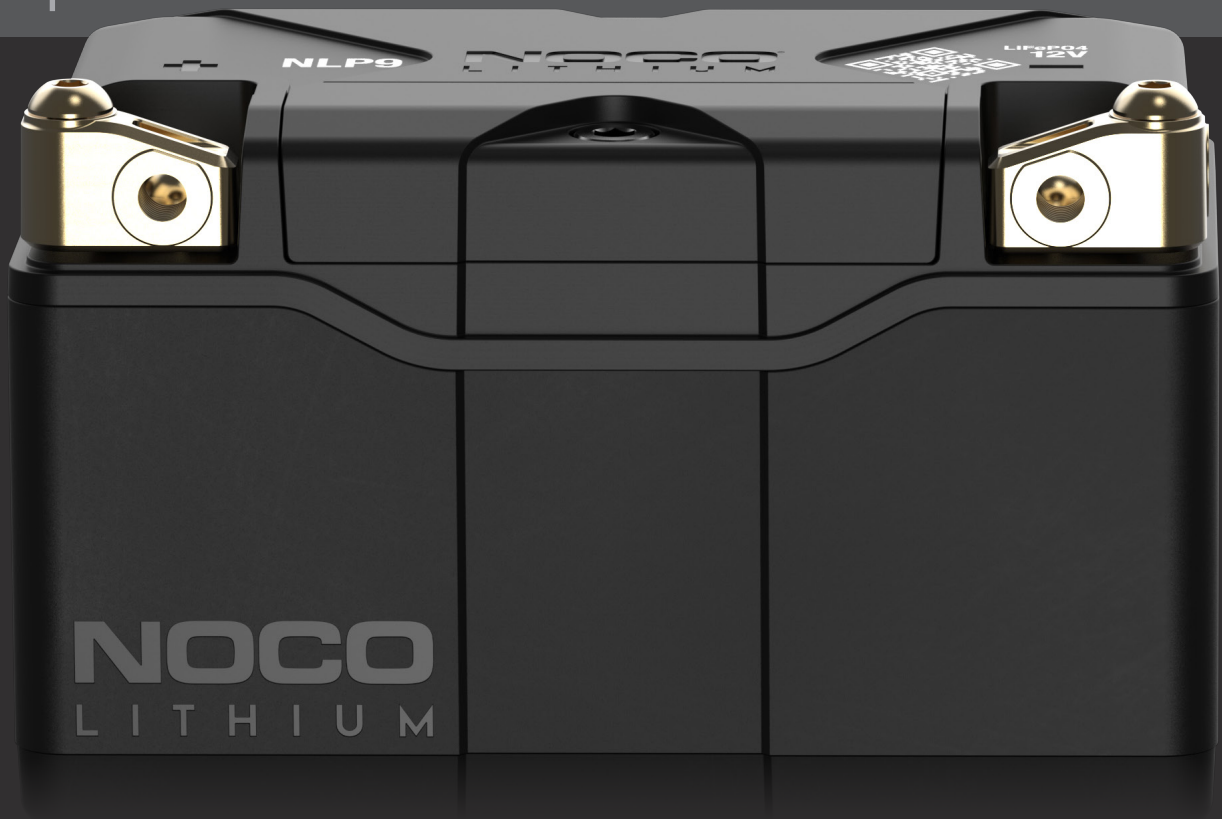


12V

3Ah

NLP9



# INSANE PERFORMANCE. LITHIUM POWERSPORT BATTERY.™

2X

MORE POWER.

10X

MORE STARTS.

5X

LONGER LIFE.

## DYNAMIC BMS.

Equipped with an auto-enabled, advanced battery management system that provides maximum protection, performance, and bi-directional cell equalization for long-lasting stability. No BMS reset needed.

## ACTIVE PROTECTION.

Protects against over-charge, extreme-heat, short-circuit, over-discharge, extreme-cold, and over-current.

## SHOCK ABSORPTION.

Designed with a custom rubber dampening base and foam inserts to extend the life of the battery and keep connections secure.



**NOCO**

30339 Diamond Parkway, #102  
Glenwillow, OH 44139 | USA  
1.800.456.6626

no.co

**NOCO**  
LITHIUM

**NOCO**

## UNIVERSAL MOUNTING.

Modular spacers can be added to alter the size and allow the battery to be safely and securely mounted. A removable mounting block allows the battery to fit more applications. The threaded insert enables direct-mounting for additional simplicity and security.

Removable Mounting Block  
Threaded Insert  
M6-1 Thread Size.

Hex Screw  
M6-1x20mm



FEMALE.



SIDE.



TOP.



FRONT.



## MULTI-CONNECTION TERMINALS.

Equipped with premium IP66 waterproof copper PCB plates. NLP Terminals can be mounted from the front, side, or top, and can be removed altogether depending on the application.

## RAPID RECHARGE.

Use the Lithium mode on a Genius charger to fully recharge an NLP battery in minutes. See Genius models and charging times below.

## COMPATABLE SIZES.

### BCI SIZES

BTX7A-BS  
BTX9-BS  
BTR9-BS

### YUASA SIZES

YTX9  
YTX7A-BS  
YTX9-BS

### ETX SIZES

ETX9



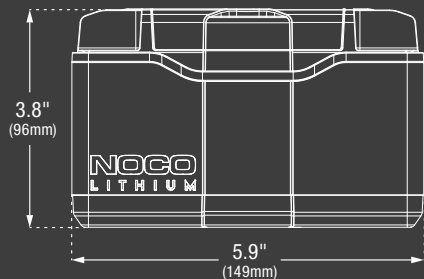
## RECHARGE TIME

GENIUS1	180 Minutes
GENIUS2	90 Minutes
GENIUS5	36 Minutes
GENIUS10	N/A

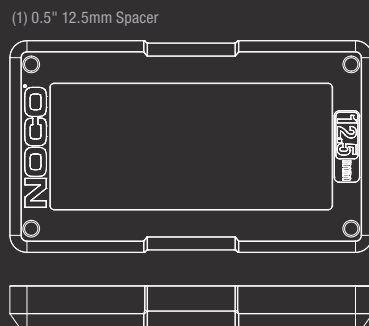
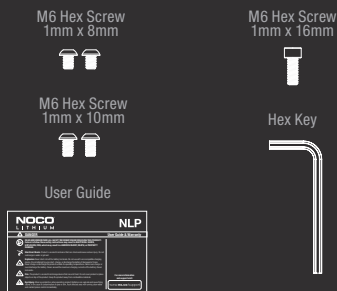
## TECHNICAL SPECIFICATIONS

BCI SIZE:	9
CHEMISTRY:	Lithium Iron Phosphate (LiFePO4)
NOMINAL VOLTAGE:	12.8
AMP-HOURS:	3
WATT-HOURS (WH):	38.4
STARTING CURRENT:	400
CHARGING VOLTAGE (V):	14.6V
CHARGING CURRENT (A):	9A (Max)
OPERATING TEMPERATURE:	-20°C to 60°C
CHARGING TEMPERATURE:	-10°C to 50°C
STORAGE TEMPERATURE:	-20°C to 60°C
WEIGHT:	2.29 lbs (1.03 kg)
VOLUMETRICS:	<p><b>Retail Packaging:</b> Dimensions: 6.18" x 4.84" x 4.77" Weight: 3.17 lbs UPC: 0-46221-19008-3</p> <p><b>Master Carton:</b> Dimensions: 13.50" x 6.18" x 10.63" Weight: 15.93 lbs Quantity: 6 UCC: 10046221190080</p> <p><b>Inner Carton:</b> Dimensions: 6.02" x 4.37" x 5.04" Weight: 2.56 lbs</p> <p><b>Units Per Pallet:</b> 324 Units</p>

## WHAT'S IN THE BOX



\*Accessories not to scale with NLP9



NOCO

30339 Diamond Parkway, #102  
Glenwillow, OH 44139 | USA  
1.800.456.6626

no.co

